

Wasatch SoftRIP 6.9 supports the double-sided printing capability of the HP Designjet L26500 and L28500 printers. This feature allows users to print double-sided print jobs with minimal operator intervention because the HP Optical Media Advance Sensor (OMAS) controls registration automatically. Users can also save production time because there is no need to rewind the roll between sides. The steps outlined below apply to both the HP Designjet L26500 and the HP Designjet L28500.

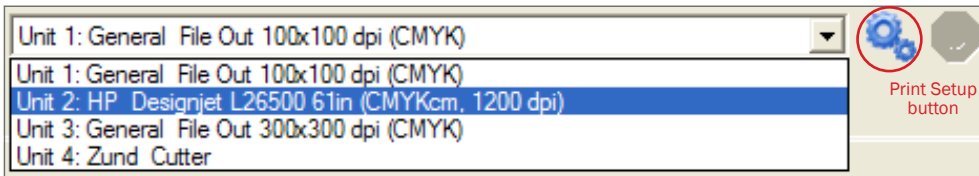


Illustration 1

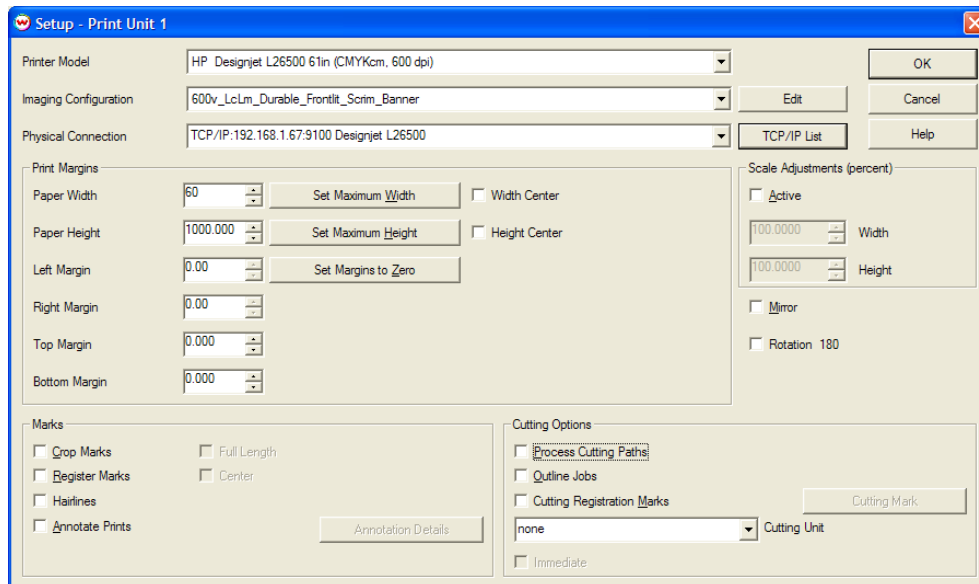


Illustration 2

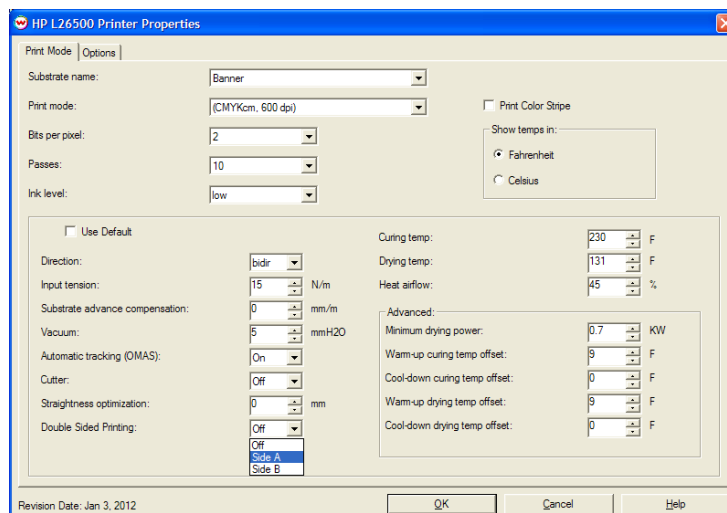


Illustration 3

1. To begin, open SoftRIP.
2. Select the print unit you would like to use for **Side A** printing from the drop-down menu, then click the **Print Setup** button. (Illustration 1)
3. In the Setup window, select your **Printer Model**, **Imaging Configuration**, and **Physical Connection**. Select any of the other features in the Setup window that you'll need when you print. (Illustration 2)  
***NOTE:** If you select the Mirror and/or Rotation 180 options in this window, the transforms will be applied to your job, but you will not see the change in the Job window. If you choose these options directly in the Job window, you will see the transforms applied to your job.*
4. Click the **Edit** button next to the Imaging Configuration drop-down menu, then click the **Properties** button.
5. In the **Printer Properties** window that opens, uncheck the box next to **Use Default** if it is checked. From the **Double-Sided Printing** drop-down menu, select **Side A**. When all your other settings have been configured, click **OK** until you are prompted to save a new Imaging Configuration. (Illustration 3)

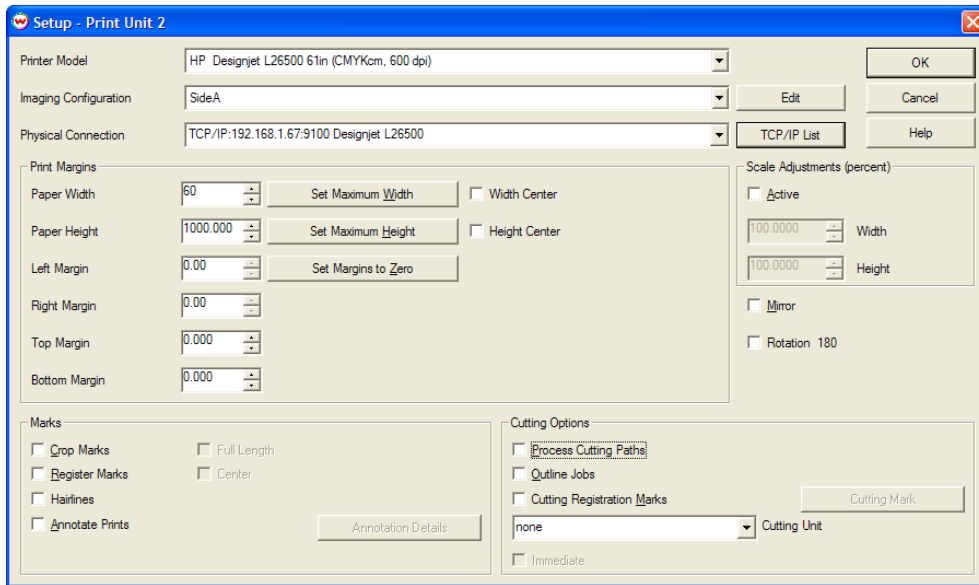


Illustration 4

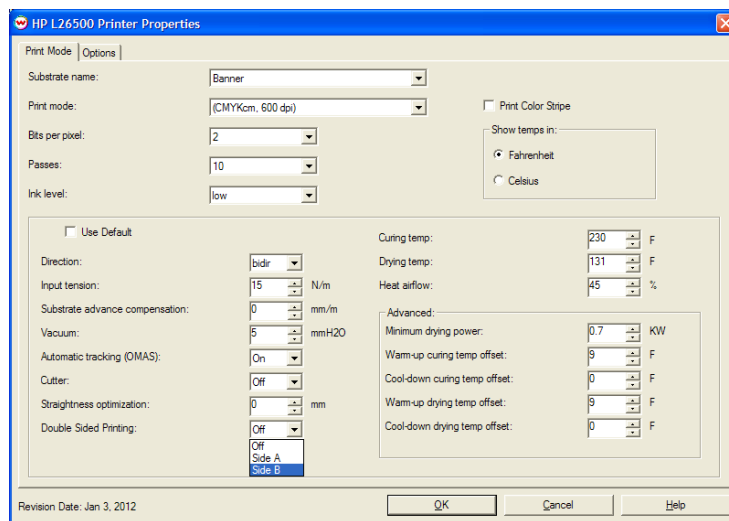


Illustration 5

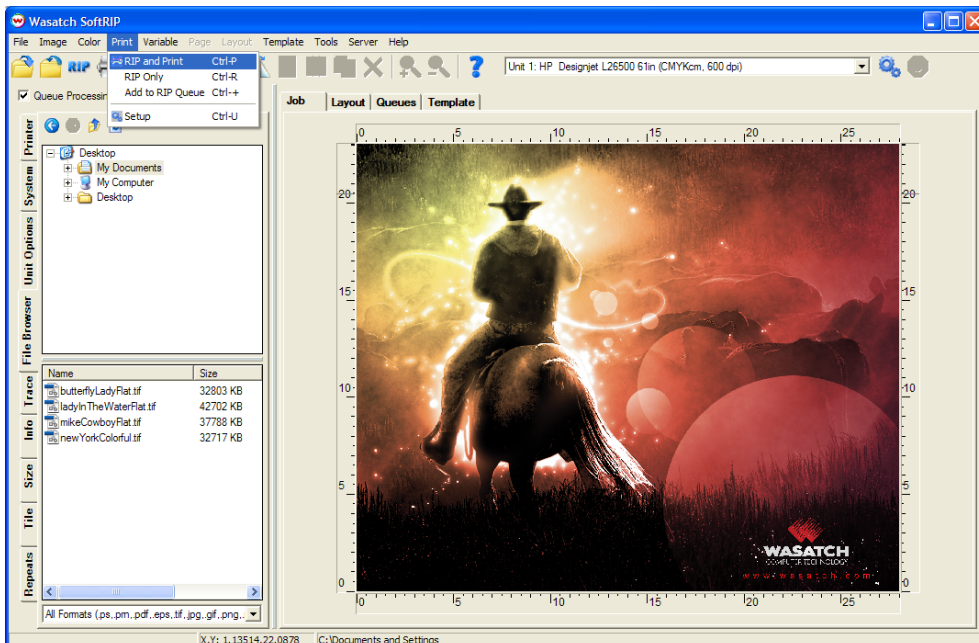


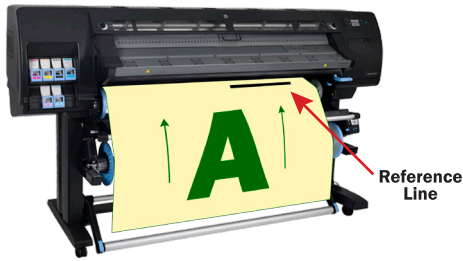
Illustration 6

6. Now select the print unit you would like to use for **Side B** printing from the drop-down menu, then click the **Print Setup** button. (Illustration 1)
7. In the Setup window, select the same **Printer Model** and **Physical Connection** you used for Side A. Use the same settings (Paper Width, Paper Height, etc.) that you selected when configuring Side A. Otherwise, the alignment will be off when Side B prints. Select any of the other features in the Setup window that you'll need when you print. Select the **Imaging Configuration** you just created for Side A printing. (Illustration 4)
8. Click the **Edit** button next to the Imaging Configuration drop-down menu, then click the **Properties** button.
9. In the **Printer Properties** window that opens, uncheck the box next to **Use Default** if it is checked. From the **Double-Sided Printing** drop-down menu, select **Side B**. When all your other settings have been configured, click **OK** until you are prompted to save a new Imaging Configuration. (Illustration 5)

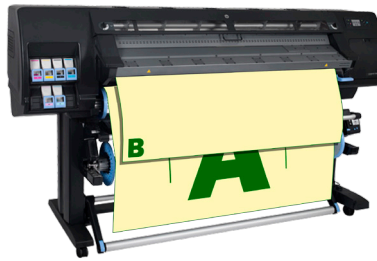
**NOTE:** The same print unit can be used to print both Side A and Side B. However, using two separate print units, one for each side, may help with job management, be more efficient, and help eliminate errors.

10. Select the print unit you're using for **Side A** printing.
11. Open your image in the **Job** window.
- NOTE:** The double-sided printing option does not work with layouts.
12. Select **RIP and Print** from the Print menu. (Illustration 6)

## Loading the Substrate for Side B Printing



Reload the substrate with Side A facing up as it enters the printer, and with the reference line near the leading edge.



Side B will print on the back of Side A.

Illustration 7

**NOTE:** You can print multiple Side A jobs before flipping the substrate and printing your Side B jobs. However, the Side B jobs will need to be printed in the reverse order of the Side A jobs to ensure that both sides of the job are properly aligned.

13. After the last **Side A** job has printed, cut the substrate manually or by selecting **Form feed and cut** from the front panel. If you have to manually cut the substrate, make the cut as straight as possible.

14. Reload the substrate with **Side A** facing up as it enters the printer, and with the reference line near the leading edge. Reload if necessary until the printer finds less than 1 mm/m skew. (Illustration 7)

15. Go back to the **Job** window (where your image is already open).

16. Select the print unit you're using for **Side B** printing.

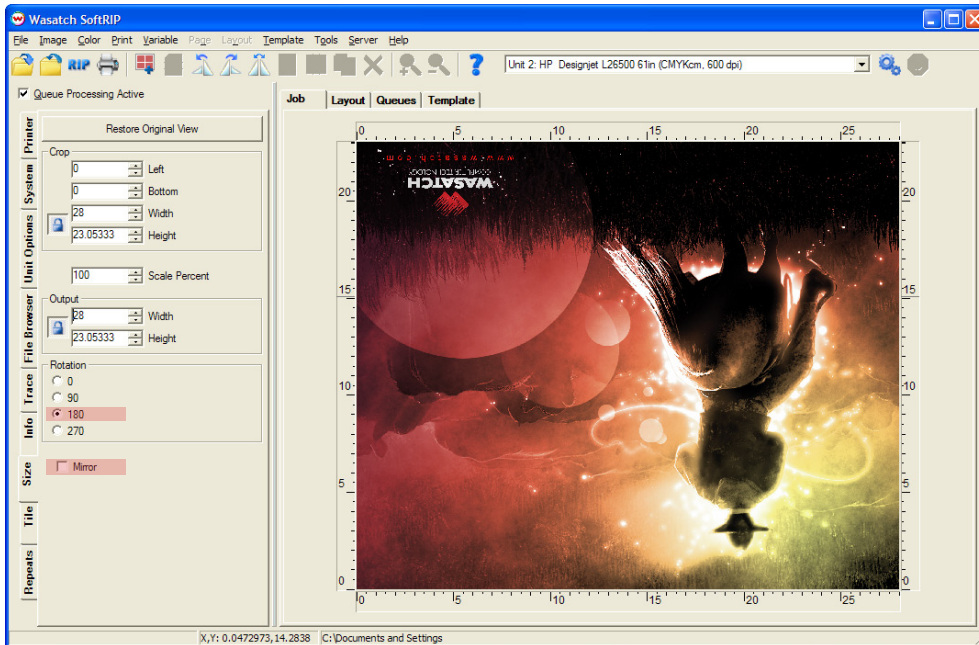
17. Select **Rotation 180** from the **Size** tab. If your workflow requires that you **Mirror** your print job, select that option as well. **If you already made these selections in the Print Setup window, this step is not necessary.** (Illustration 8)

**NOTE:** Rotation 180 **MUST** be selected when using double-sided printing.

**NOTE:** If you select the Mirror and/or Rotation 180 options in the Job window, you will be able to see the transforms applied to your job. However, if you choose these options in the Print Setup window, the transforms will be applied to your job, but you will not see the changes in the Job window.

18. Select **RIP and Print** from the Print menu. (Illustration 6)

**It may be useful to view user guides or other documentation from HP before you start double-sided printing.**



Selecting **Rotation 180** will keep the sides oriented in the same direction (when you follow the correct loading procedure for double-sided printing).



Side A



Side B  
(with Rotation 180 applied)

Selecting **Rotation 180** and **Mirror** will produce a mirror image on Side B.

**NOTE:** Avoid using the Mirror option when your image has text (to avoid mirroring text).



Side A



Side B  
(with Rotation 180 and Mirror applied)

Illustration 8